

# GREEN LACERTAS OF SPAIN AND PORTUGAL

## *Timon* and *Lacerta*

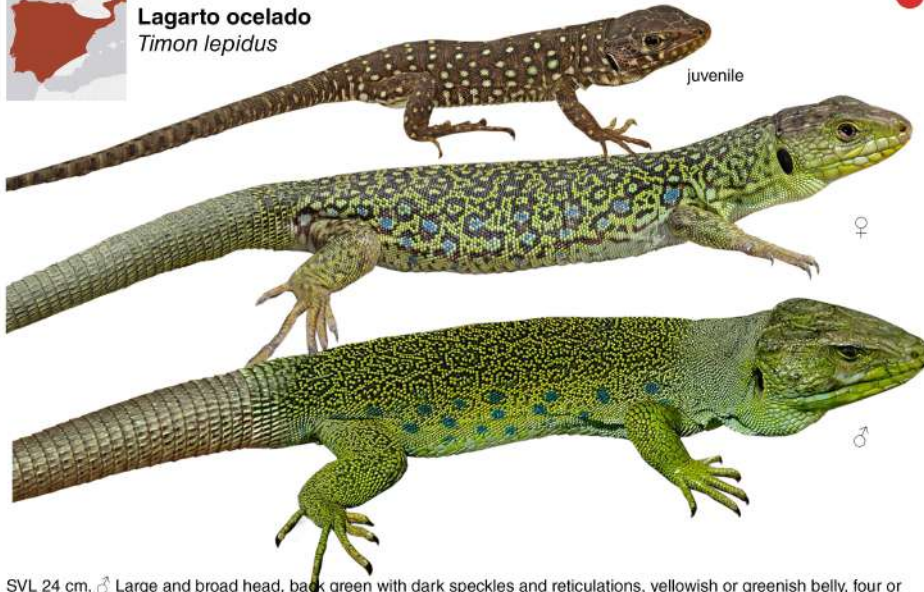
José R. Castelló



### EUROPEAN OCELLATED LIZARD

**Lagarto ocelado**

*Timon lepidus*



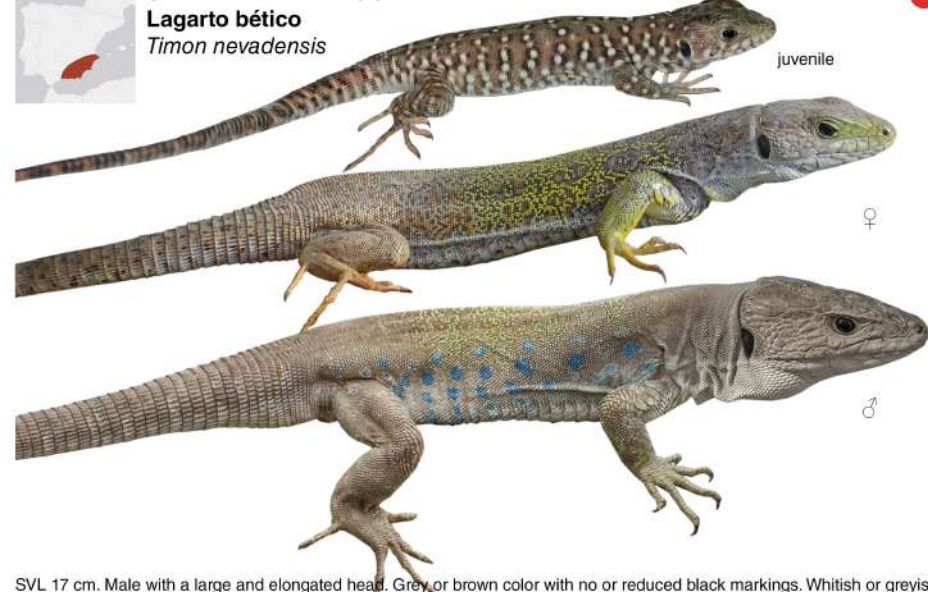
SVL 24 cm. ♂ Large and broad head, back green with dark speckles and reticulations, yellowish or greenish belly, four or more large blue ocelli on flanks. ♀ Smaller, less robust and with less marked ocelli. Serrated collar. Occipital scale large, generally wider than posterior edge of frontal scale. 8-10 rows of ventral scales. Juveniles green, grey, or brown covered with dark-edge yellowish or white spots.



### SIERRAN NEVADA OCELLATED LIZARD

**Lagarto bético**

*Timon nevadensis*



SVL 17 cm. Male with a large and elongated head. Grey or brown color with no or reduced black markings. Whitish or greyish belly. Blue ocelli on flanks, but extension and intensity more limited than in *Timon lepidus*. Serrated collar. Occipital scale narrower than in *Timon lepidus*. 8-10 rows of ventral scales. Female smaller, less robust and with less marked ocelli. Juveniles green, grey, or brown with back usually covered with dark-edge white spots.



### SAND LIZARD

**Lagarto ágil**

*Lacerta agilis garzoni*



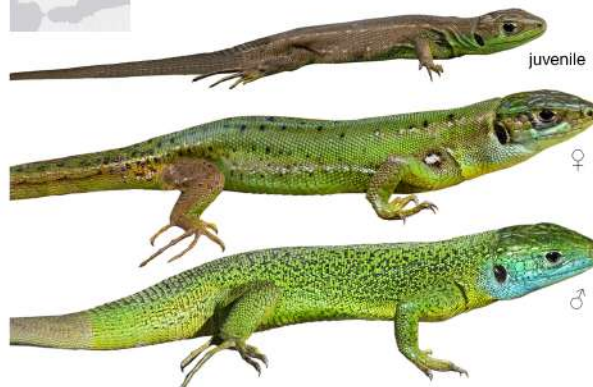
SVL 8 cm. ♂ green flanks with variable pattern of dark blotches and ocellated spots; back brown or gray, with two pale, broad, unspotted dorsolateral bands and interrupted dorsal streak; belly green with black markings. ♀ Brown or gray, almost never green on flanks; belly white to greenish with less black markings. Short snout. Juveniles grayish with many ocelli on flanks and back



### WESTERN GREEN LIZARD

**Lagarto verde occidental**

*Lacerta bilineata bilineata*



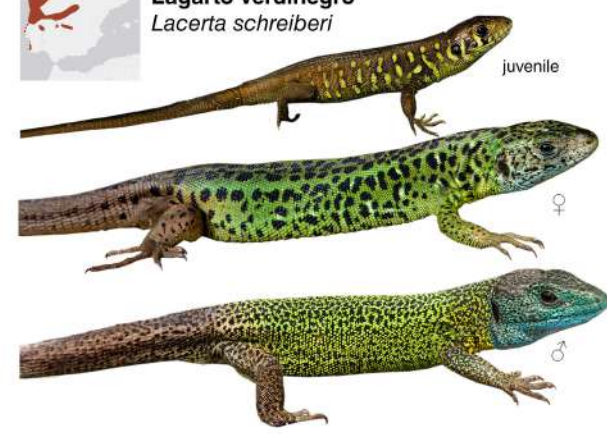
SVL 13 cm. ♂ Back and flanks emerald green; throat bright blue extending onto part of the head; belly yellowish unspotted. ♀ Smaller; back and flanks emerald green or brown; small black dots on back; sometimes pale dorsolateral lines; throat and belly yellowish to white; brown temporal area. Six rows of ventral scales. Few or no supraciliary granules. Fewer than 20-15 temporal scales. Triangular occipital scale. Juveniles gray, brown or green; sometimes 2-4 white



### IBERIAN EMERALD LIZARD

**Lagarto verdinegro**

*Lacerta schreiberi*



SVL 13 cm. ♂ Back green covered with small black dots, forming a reticulated pattern; flanks green with smaller dots; tail and hindlegs brownish; head bright blue (breeding season); belly yellowish, heavily spotted. ♀ Back and flanks green or brown, with larger blotches or spots; dorsolateral parts often unspotted; tail and hindlegs brownish; belly often spotted. 8-10 rows of belly scales. Juveniles with ocellated yellowish spots on the flanks.

